

Vanity
BY DESIGN



Installation & Care *Guide*

Thankyou

**for your recent purchase
with Vanity by Design!**

By placing an order with us you have agreed to our terms and conditions.

This document includes our policies, care guides and other useful information to get the most out of your Vanity by Design products in your home.

We ask that you carefully read through this guide and keep it as a reference to help you enjoy your Vanity by Design products for many years to come!



**“ Catering for all
personalities, spaces &
scopes since 2006 ”**

Warranties, Refunds & Exchanges

FIRST THINGS FIRST

Please double check that all details on your invoice are correct.

Once we have dispatched your order from our Brisbane warehouse, there may be additional fees for any Refunds or Exchanges.

We do not issue any refunds or exchanges on products after dispatch that are:

- Discontinued items
- Floor stock
- Accidental damages that have occurred on site or upon installation

Warranty

At Vanity by Design we back the quality of our products with a 5 year warranty on cabinets and a 2 year warranty on benchtops.

Please note all products must be installed by a licensed Trades person in accordance with Australian standards/BSA regulations or warranty may be void.

Floor sale items are purchased and accepted as displayed.



5 DAY REFUND POLICY

From the day you receive your order you have 5 days to notify Vanity by Design of any issues or defects regarding your purchase.

This includes damaged, missing or incorrect items.

After the 5 days we will treat this as an exchange.

Each enquiry is considered on a case by case basis.

Please email: enquiries@vanitybydesign.com.au with any concerns.

Please include the following information:

- Invoice number
- Best contact details
- Description of issue / defects
- Images of issue / defects

ORDERS NOT DISPATCHED

Vanity by Design offers a full money back guarantee from the initial date of purchase only if the order has not been dispatched from our Brisbane warehouse.



Returns



CUSTOM PAINT RETURNS

Please ensure you are 100% happy with your custom colour choice as we do not offer any refunds or exchanges for change of mind.

Exchanges



When exchanging an item please make sure it remains in its original packaging and original condition. Goods cannot be exchanged after installation.

The customer acknowledges that the product they have originally purchased is of the correct size and colour, failure to do so will result in a restocking fee of \$110 per vanity plus two freight charges. (Freight charge to return to our Brisbane Warehouse plus freight charge of new product delivery to the customers selected address).

Please note: Freight prices may vary due to the location of delivery. Freight charges will not be reimbursed by Vanity by Design.

Installation



To ensure that your vanity is installed correctly, all products must be installed by a licensed trades person in accordance with Australian standards/BSA regulations or your warranty may be void.

Below is an easy to follow guide to assist with the installation of your new vanity.

We ask that all customers and licenced trades people carefully read the Installation Guide before installation.

UNBOXING

Prior to installation, unpack your new vanity to inspect for any damages or defects. If you do notice any damages or defects please notify us within 5 days of receiving your order as per our refund policy.

We do recommend keeping the products in their original packaging until you are ready to install them to prevent any damages.

SCREWS

Our vanities do not come with fixings as each home varies in materials and structure. Have your licenced tradesperson assess your space prior to installation as each tradesperson may have their own process on how to install your vanity.



Installation



BENCHTOP INSTALLATION

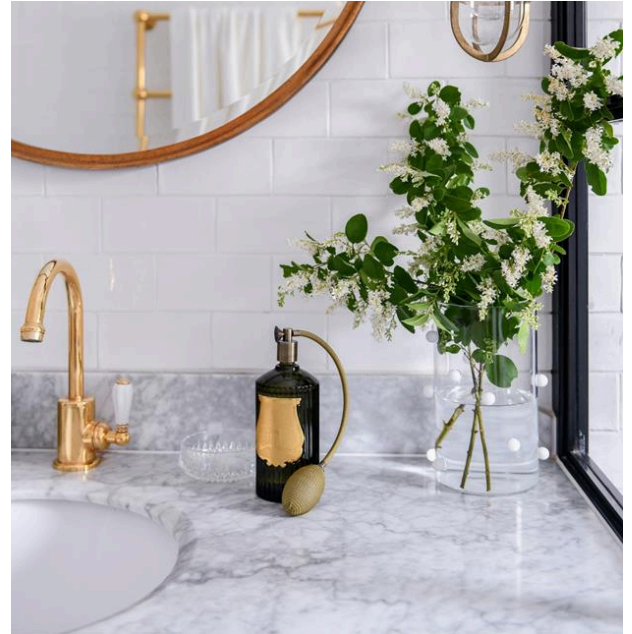
To ensure your stone benchtop is secured properly, we recommend using a small amount of silicone on the cabinet top edge to fix your benchtop in place.

SPLASHBACKS

Some of our traditional style collections come with splashbacks (not full width). To install the splashback, it will need to be centered to your benchtop, and secured with a small amount of silicone to the wall and to the stone benchtop.

Please note: Installation of the splashback is optional.

By meeting the above conditions upon installation, future warranty issues are prevented.



Drawer Runners

Vanity By Design uses Blum Tandem drawer runners. If you require assistance installing your drawers correctly please watch the following video:



<https://www.youtube.com/watch?v=4irI9oJqNhM>

Installation *Guide*



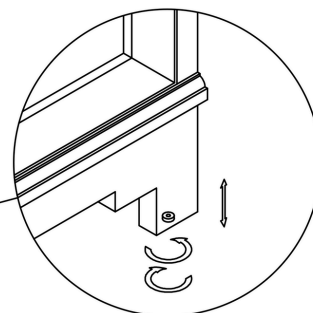
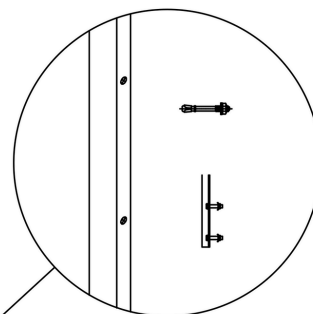
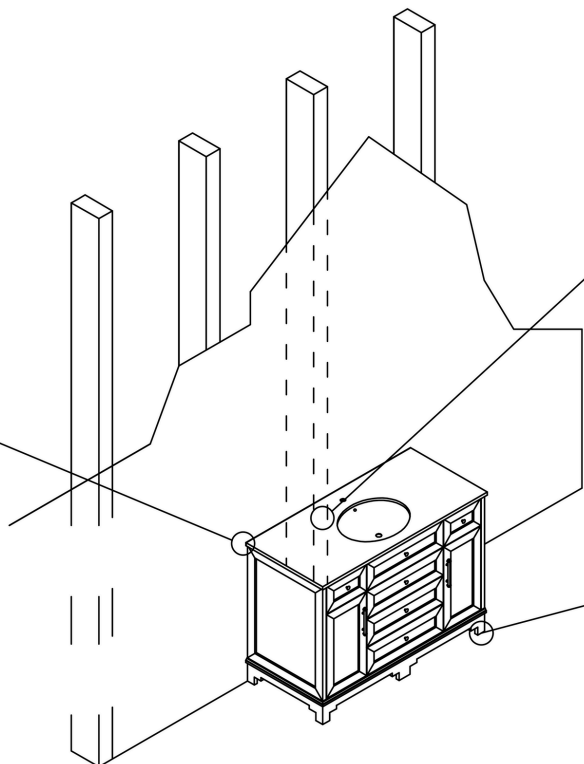
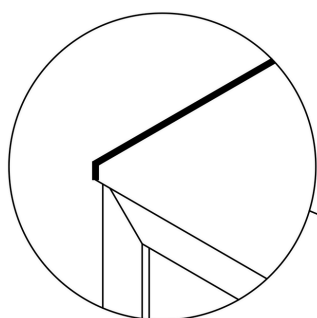
BEFORE YOU BEGIN

1. VBD products must be installed by a licensed trades person in accordance with Australian standards/BSA regulations to avoid your warranty becoming void.
2. The wall must be square and level.
3. Shut the water supply off when replacing an existing fixture. Preparation of floors and walls, including all additional wall supports, may be required
4. Conduct a leak check - Close your pop down waste and fill the basin with water until it reaches the overflow, leave for up to 5 minutes and check if there are any leaks present from the basin or waste.

FREE-STANDING VANITY

Pre-drill holes through wall studs, fasten vanity to wall stud.

Apply silicone to bottom of the countertop.



Place vanity in desired location and level.

Installation *Guide*

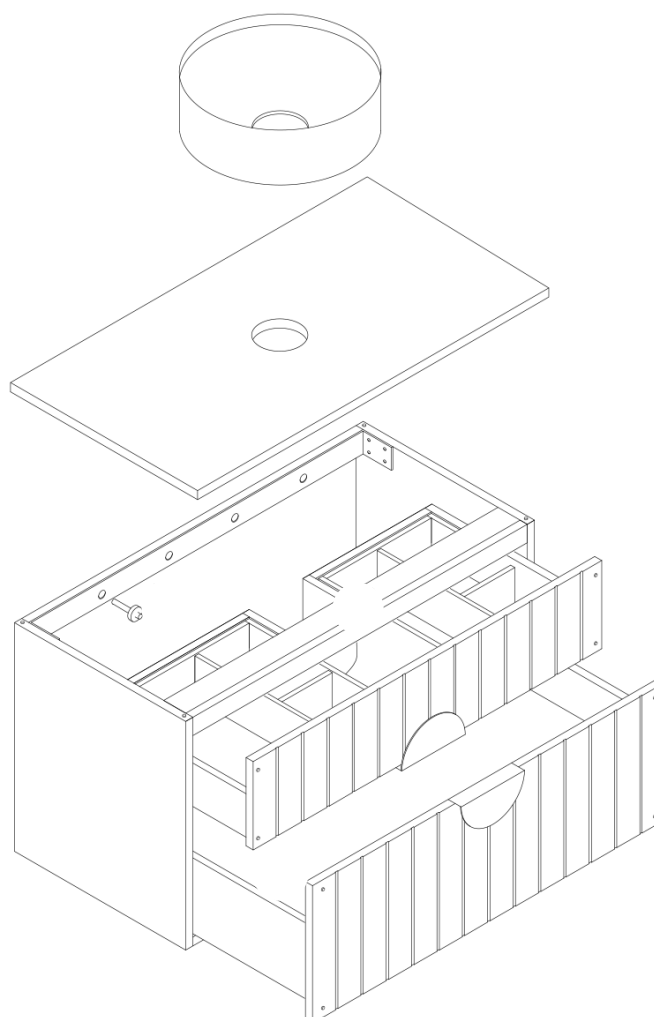


WALL HUNG VANITY

Do not lift the unit from top/front framing.

The standard height for a vanity is 850mm - 900mm.

1. Locate stud position, screw through the back of cabinet into studs. Screw type may differ depending on substrate. (x6)
2. Fit optional rubber bumpers (x8) to the top of each end gables. Fit stone top in place onto bumpers.
3. Check stone top overhang is even on sides and front
4. Check the rubber bumper cushions (x4 per drawer, x2 per door) as they can become damaged through transportation. Additional replacement rubber cushions are supplied. Simply peel the old damaged bumper off and stick the new bumper back on.
5. Apply Silicone to bottom of the basin to secure to the benchtop



Benchtops *Guide*



CLEANING AND MAINTENANCE GUIDE

To keep your benchtop in tip top shape, follow the below guidelines.

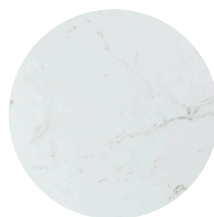


- To keep your benchtop clean, simply wipe with warm soapy water and a mild Detergent and a damp, clean cloth and dry with a clean dry cloth.
- Avoid exposure to products with high pH levels such as oven cleaner. If the benchtop meets such products, rinse immediately to neutralise the effect, and then follow the usual cleaning procedure.
- Avoid exposure to paint strippers, paint removers, bleach, and nail polish remover. Rinse immediately with clean water to neutralise the effect, and then follow the usual cleaning procedure.
- Avoid abrasive cloths and cleaning solutions on engineered stone tops.

Bench Top Options



Italian Carrara
Natural Marble



Ayla
Crystalline Silica-Free
(Engineered Stone)



Snow-Blanc
Crystalline Silica-Free
(Engineered Stone)



CLEANING AND MAINTENANCE GUIDE

It is important that you care for your marble tops, to keep them in the best condition possible. Marble is a natural stone which needs careful maintenance as it is porous.



CLEANING

The porous nature of natural stone means that it is susceptible to staining by certain substances (toothpaste) and it absorbs moisture.

Using abrasive cleaning agents will damage the stone. We advise not to use acidic products such as vinegar, lemon juice or other cleaners containing acidic elements on marble, including bleach. This will not be covered under our warranty policy.

Tops must be cleaned with a pH neutral cleaner only, readily available at your local supermarket.

SEALING

Your marble top can be sealed upon installation if you feel it's necessary for your bathroom. This is available from a reputable stone care merchant. We recommend that you contact 'The Marble Man' who can assist with any advice needed in regards to your bench top. www.themarbleman.com.au.



vanitybydesign.com.au



TEL: 07 3376 6055



[vanitybydesign_](https://www.instagram.com/vanitybydesign_)



241 Monier Road
Darra, QLD, 4076



enquiries@vanitybydesign.com.au