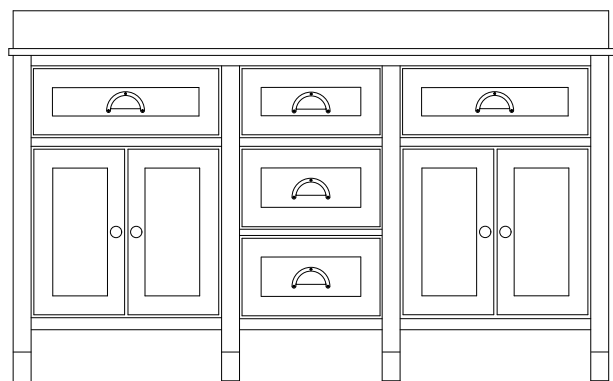




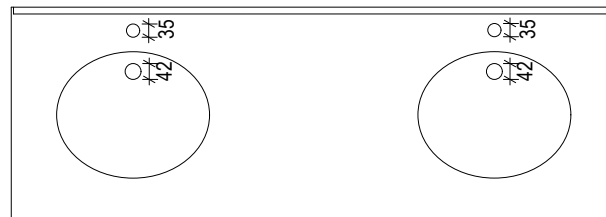
880

980
175
30
100
18
27
440
30
160

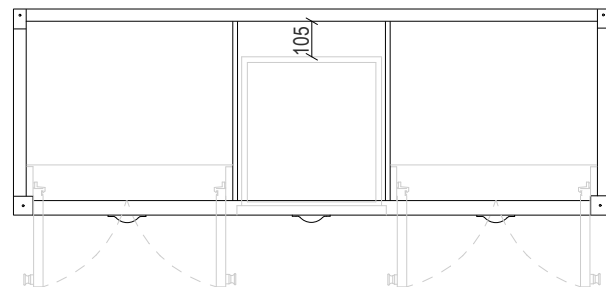
1600
50 500 50 375 50 500 50



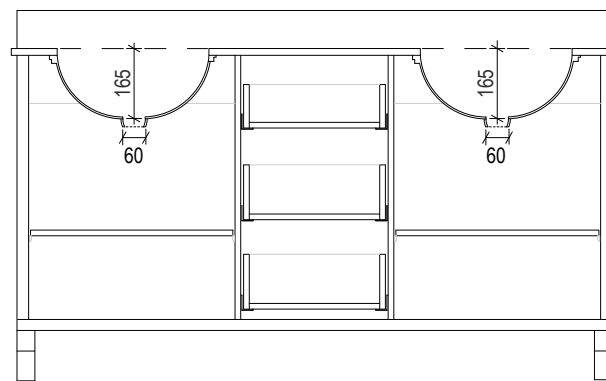
1600
120 400 560 400 120



1575



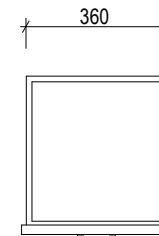
30 557.5 15 370 15 557.5 30



105
315
78
560

545

100
18
455
15
210
22

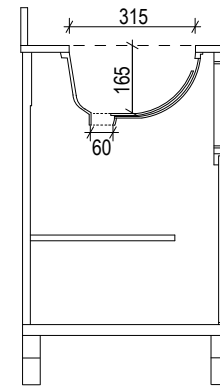


555



560

545



Vanity By Design

ABN: 99 121 837 143

Brisbane Address:

241 Monier Road, Darra QLD 4076

Phone: Brisbane (07) 3376 6055

Email: enquiries@vanitybydesign.com.au

Website: <https://www.vanitybydesign.com.au/>

Name:	Eastport 1600 Double
Size :	1600(W) mm x 560 (D) mm x 880 (H) mm
Type:	Freestanding
Cabinet Material:	Solid Sustainable Plantation Timber
Basin Material:	Ceramic under-mount basins with overflow protection
Bench Top Finish:	Carrara white marble or Emperador marble
Splashback:	Removable splashback NOT FULL WIDTH
Taphole Options:	1 taphole or 3 tapholes
Vanity Colour Options:	Black, White, South Hampton Grey, Duck Egg, Grey Garden

Note:

Mirrors, Wastes and Tapware not included.
Plumbing fixtures must be installed by a qualified plumber (waste not supplied).
Vanity must be installed by a qualified tradesperson.
Failure to do so may void the warranty.
Vanity By Design vanities include a 5 year warranty on cabinets and tapware and 12 month warranty on tops, basins, mirrors, mirror shelves and mirror cabinets.

Caution:

Component may be heavy and require two people to lift.
Do not stand or sit on vanity.