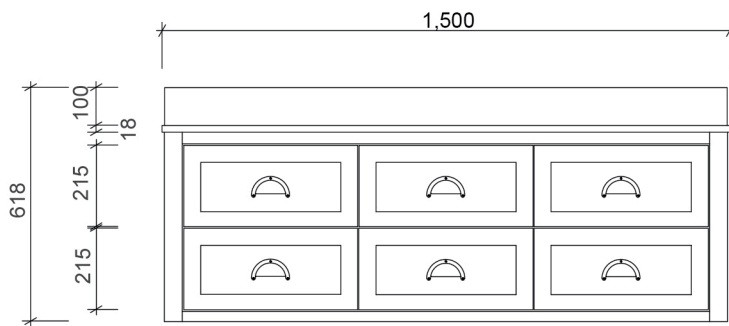
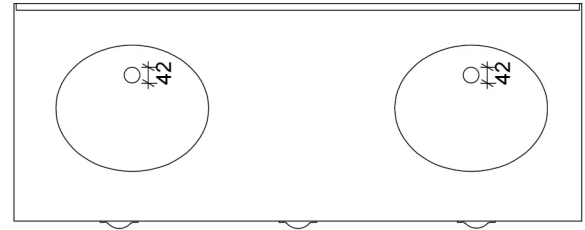


100
18
500



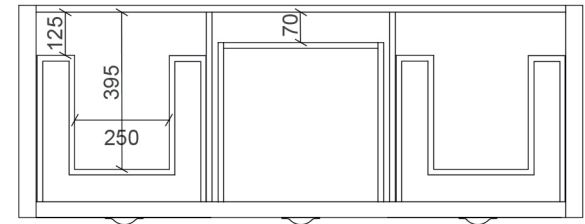
1,500
618
215
100
18
215

1,500
570 360 570



138
315
573
120

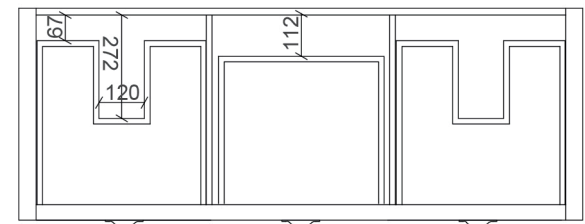
1,490



Top Drawer

100

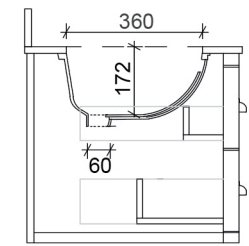
1,490



Bottom Drawer

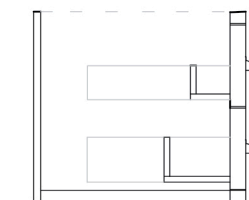
100

573
560



100
18
500

560



Section - Cabinetry only

100
18
500



Vanity By Design

ABN: 99 121 837 143

Brisbane Address:

241 Monier Road, Darra QLD 4076

Phone: Brisbane (07) 3376 6055

Email: enquiries@vanitybydesign.com.au

Website: https://www.vanitybydesign.com.au/

Name:	North Haven 1500 Double
Size :	1500 (W) mm x 57 (D) mm x 518 (H) mm
Type:	Wall Hung
Cabinet Material:	Solid Sustainable Plantation Timber
Basin Material:	Ceramic under-mount or top mount basin
Bench Top Finish:	Smartstone options *
Splashback:	Removable splashback (NOT FULLWIDTH SPLASHBACK)
Taphole Options:	No taphole, 1 taphole or three tap holes
Vanity Colour Options:	Black, White, South Hampton Grey, Navy

Note:

Mirrors, Wastes and Tapware not included. Plumbing fixtures must be installed by a qualified plumber (waste not supplied). Vanity must be installed by a qualified tradesperson. Failure to do so may void the warranty. Vanity By Design vanities include a 5 year warranty on cabinets and tapware, 2 year warranty on tops and basins and 12 months warranty on mirrors.

Caution:

Component may be heavy and require two people to lift. Do not stand or sit on vanity.